



## JUST A RUMOR

*A new work involving a pond,  
a face, and wild ducks*

**ANNA SCHULEIT**

COMMISSIONED BY THE UNIVERSITY GALLERY  
FINE ARTS CENTER, UMASS AMHERST

**P**AINTED ON THE CONCRETE façade of the Fine Arts Center at UMass Amherst, *Just a Rumor* is a three-story-high, upside-down portrait of a face. When the portrait's reflection is viewed on the surface of the adjacent campus pond, the image is inverted, producing a double portrait: the upside-down original and the right side up reflection. The painting measures approximately 40 x 45 feet (nearly 1800 square feet) and is executed in acrylic paint.

For this project Schuleit selected an outdoor location where the enormous, windowless Fine Arts Center meets the campus pond, enabling a low-tech "projection" of the painted face to be generated by nature alone—without the use of electronic devices. The face reflected in the water changes constantly throughout the day and into the night.

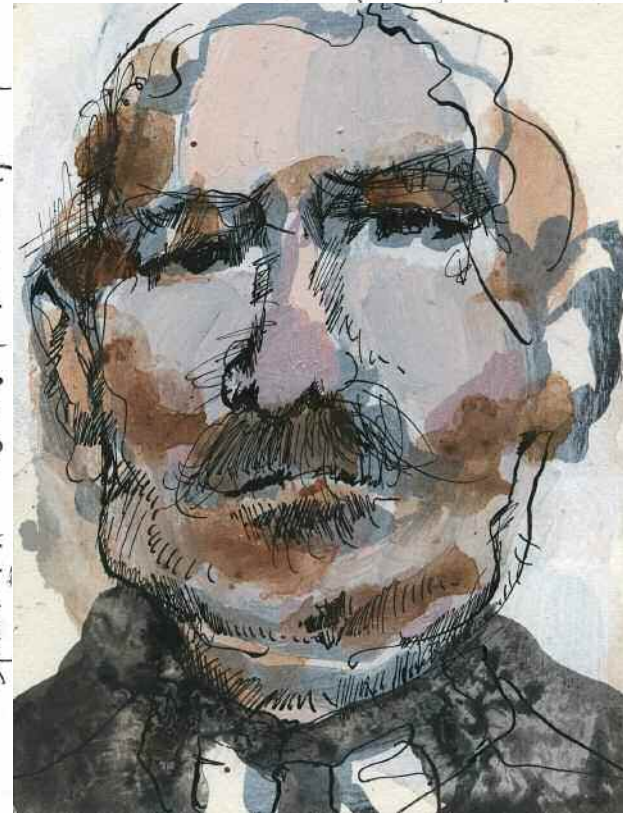


# Project Notes

- on the scale of the building  
 the painting is abstract  
 Add the aspect of upside-  
 down-ness and it gets  
more abstract.

- Using big brushes! to fit  
 the scale and surprised by how  
 even the single marks, the small  
 ones, have weight and presence  
 in the whole.

stubborn nose, fleshy face



stiff collar good face but eyes awestruck

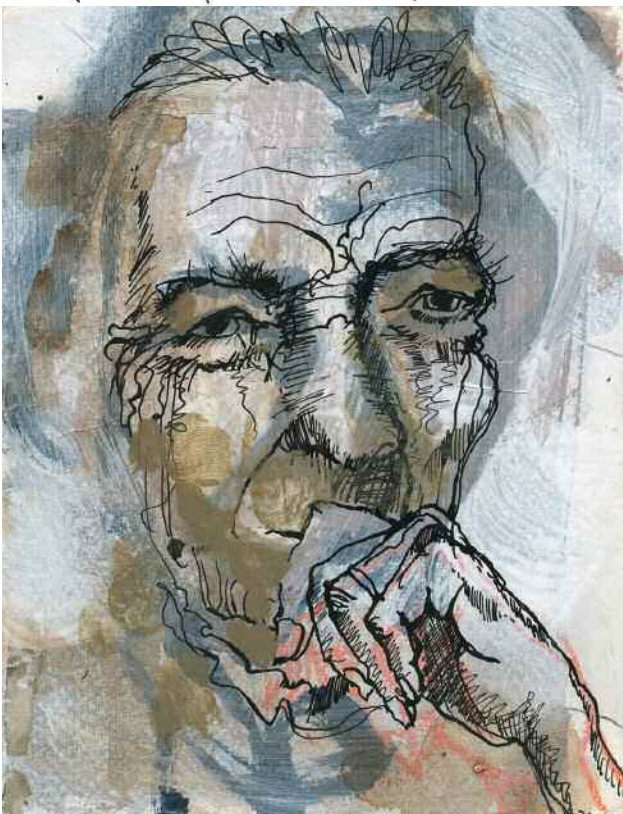
lawyer? judge?  
 = not the right type for the POND

Car:  
 needs more definition!

← rough shave  
 = some stubble adds mystery

Would look if eyes good on net/dnd directly viewer

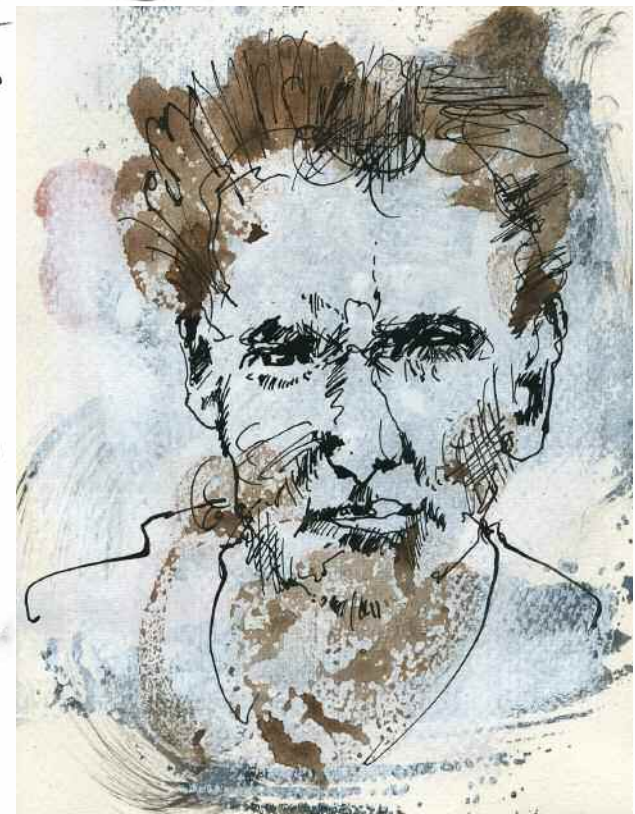
Portrait of a Woman = Louise Bourgeois?



and we this - eyes averted need direct gaze

presence of hands/fingers = adds gesture of contemplation

looks a little like Dennis Hopper, ho? (he got dyed by the way) Love his hair



mouth askew = strange fella, stubborn, crooked maybe

eyes not defined enough = need more.



How much paint?  
15 gallons, roughly.

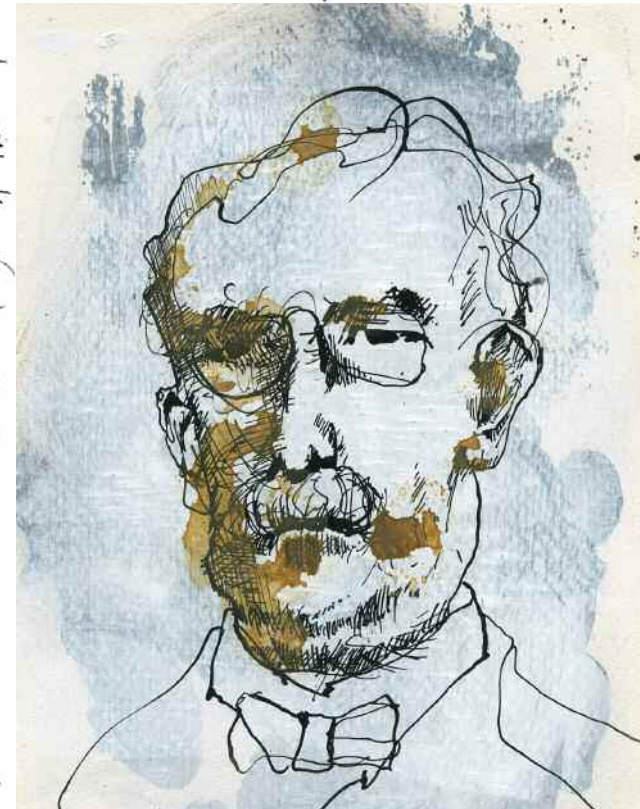
NOTION OF  
NEAR + FAR:  
= detail and whole

It was a humbling process — making me feel small  
and slow against the larger, wider context of  
the WORK — the huge expanse  
of wall  
— in its outdoor setting.

And then there is Narcissus .....

Like the yellow water marks  
against the blue background

asymmetrical ears,  
small glasses,  
stem look

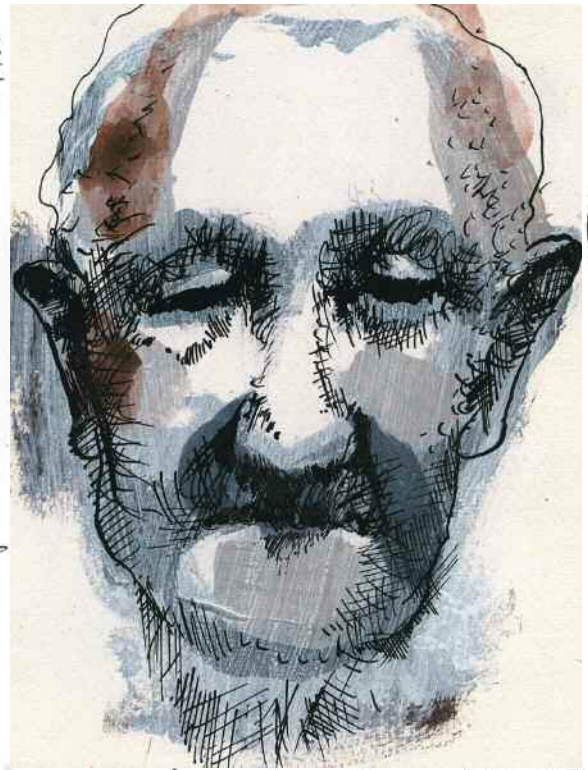


nice  
ear

"From another time"  
maybe an industrialist?  
college president?

old farmer? goes well with history! MASS "AGAT" Mom.

full forehead + squinted eyes, direct gaze !!



huge GREAT great ears!

bending outward half-funny half-fragile

= make nos. even more fleshy

a woman though!

indirect gaze



eyes turned away from the viewer

Glasses = reminiscent of the 1950's?

tight-lipped = closed personality

any mystery? too conventional maybe



JUST A RUMOR, *in progress*, 2010

MR

THE MASSACHUSETTS REVIEW  
WINTER 2010

PRINTED BY THE STUDLEY PRESS, DALTON, MASSACHUSETTS